

# Qdabra qRules v3.1

## NO CODE REQUIRED

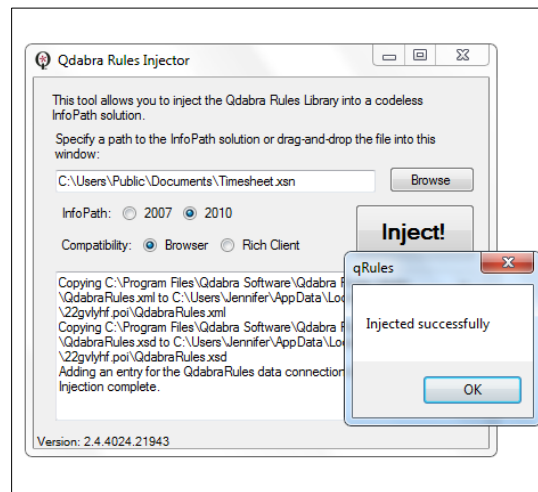
qRules has more than 50 unique commands available, including features that aren't available in InfoPath, like encrypting fields.

## SAVE TIME

Business process owners can quickly prototype and publish forms with no dependency on developers or IT staff.

## FAMILIAR INTERFACE

You simply add qRules using InfoPath Designer. You do not need to write code.



Many simple actions in InfoPath require code. Sorting tables, populating repeating tables from secondary data sources, or submitting InfoPath form data to a SharePoint list to name a few.

qRules consists of more than 50 modular commands that you can leverage together to create powerful forms with all the features that custom code provides and none of the maintenance that custom code carries along with it. Some commands, like encrypting fields, aren't even available in InfoPath today.

Save time and money with qRules, whether or not you can write code. Business process owners can quickly

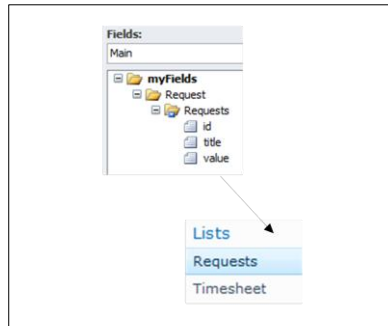
- **Images and files** - Reduce the size of XMLs, decrease open times, and enable users to edit files outside of InfoPath
- **SharePoint Lists** - Keep your list and form libraries in synch; update form fields when someone changes a list
- **Form Diagnostics** - Display form status, clear errors, control save/submit features and locations, create unique names for your forms, and more
- **Save and Submit** - Redirect where your form saves or submits, change title when it opens, clone it to create a new copy and prevent overwriting existing form

prototype and publish forms with no dependency on developers or IT staff. Experienced developers use qRules to deploy InfoPath form solutions faster and more reliably because they do not have to compile and test their own code.

The easy-to-use Injector allows you to select browser or client compatibility. It also supports re-injecting a template to update it from client to browser.

qRules includes the InfoPath to SharePoint List tool, which lets you import your XMLs to a SharePoint list, creating list items with data based on your mappings from the tool.

# Write Repeating Data to SharePoint Lists



Adding InfoPath form data to SharePoint list in a way you can actually use that data is an InfoPath-old problem. Sure, promoted properties in your form library are fine – for data one layer deep. But real-world data is often repeating and you get semi-colon delimited lists. Not so pretty, not so useful.

With qRules, you can easily add the ability to submit information from your form to a list or to two lists. You can map the fields you want to submit, even repeating fields—all without writing code.

## TECHNICAL SUPPORT

Includes our extensive library of documentation, the qRules forum, videos, and free customer webinars. Paid support options are also available.

## FREE TRIAL

Try qRules for free! Evaluate a fully featured trial and quickly inject commands into your InfoPath templates.

## FREE UPGRADES

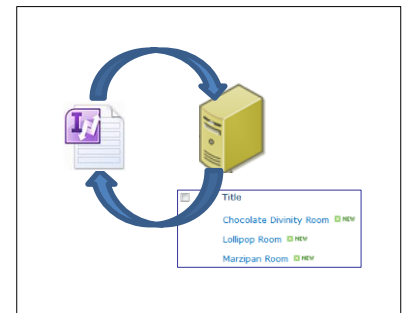
We're regularly adding new commands. Get free qRules upgrades for six months.

For more information on qRules or any of our other products or services, visit us at [www.Qdabra.com](http://www.Qdabra.com).

# Round-Tripping with SharePoint Lists

After submitting your form and submitting to a SharePoint list, make updates in the list items or your InfoPath. It's the best of both worlds.

The qRules' RefreshSharePointListItems command has two modes: report or update. When used with the SubmitToSharePointList command, your form is able to submit to a SharePoint list and be updated from the list.



# System Requirements

- InfoPath 2007 SP1 or later
- Browser forms with qRules - Use sandbox in SharePoint 2010 and admin approve in MOSS 2007

## POPULAR qRULES COMMANDS

- Attach To SharePointList
- Refresh SharePoint List Items
- Submit To SharePoint List
- Generate GUID
- Password Protect
- Generate Random Number
- Get Environment
- Get Full Date Time
- Set Default View

Qdabra Software  
218 Main Street, Suite 731  
Kirkland, WA 98033  
Phone: 877.544.2389

